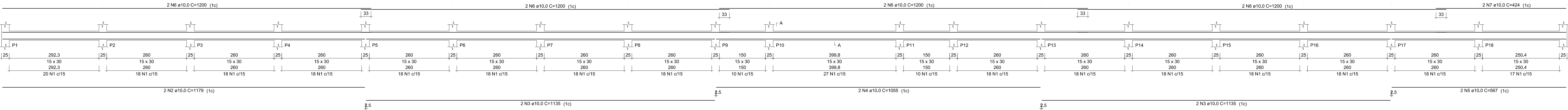


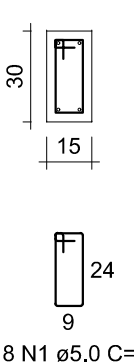
VB1

ESC 1:50



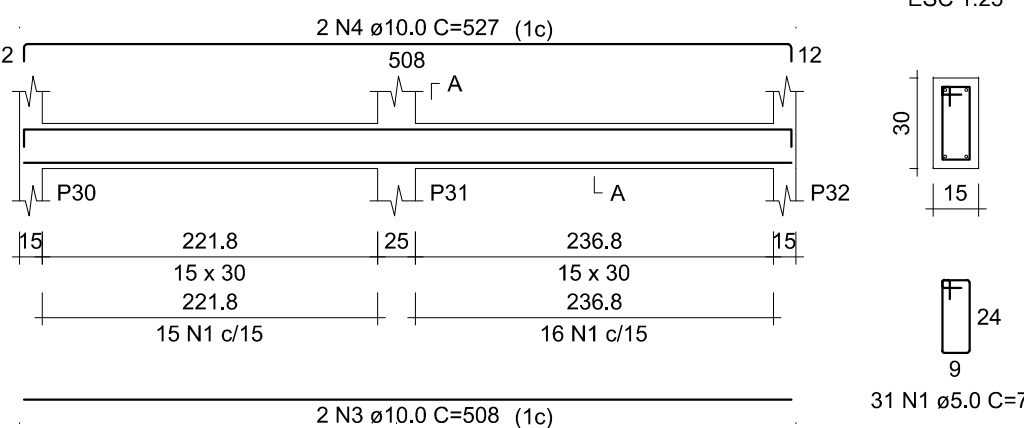
SEÇÃO A-A

ESC 1:25



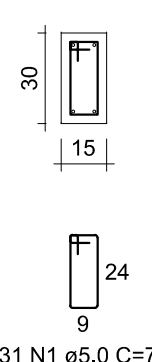
VB12

ESC 1:50



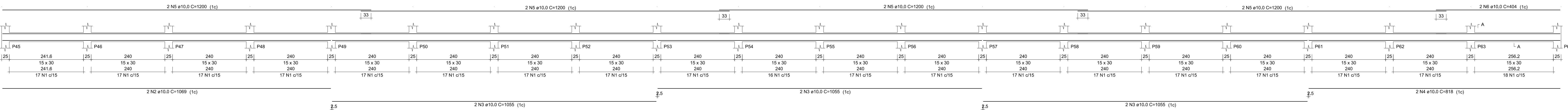
SEÇÃO A-A

ESC 1:25



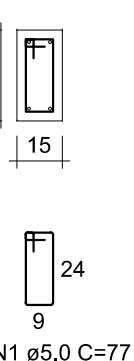
VB13

ESC 1:50



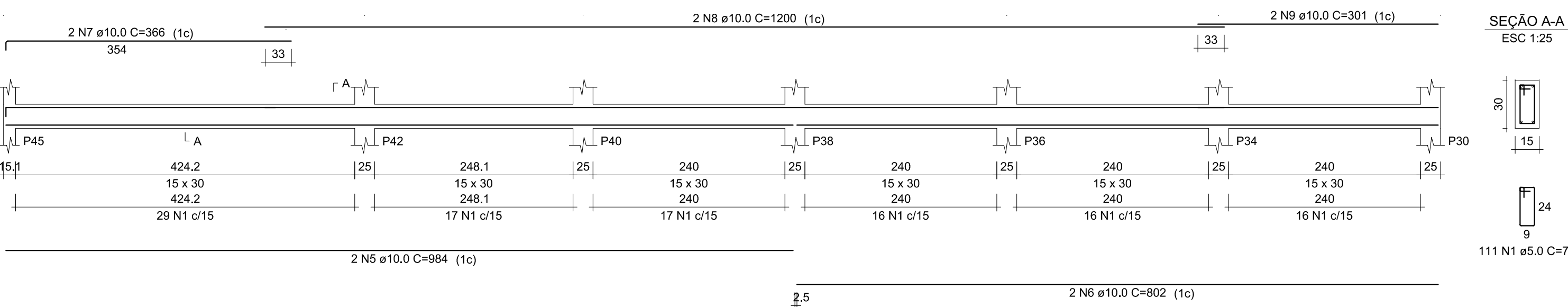
SEÇÃO A-A

ESC 1:25



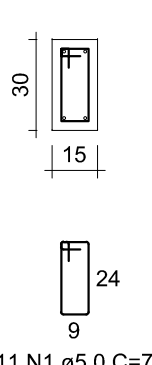
VB14

ESC 1:50



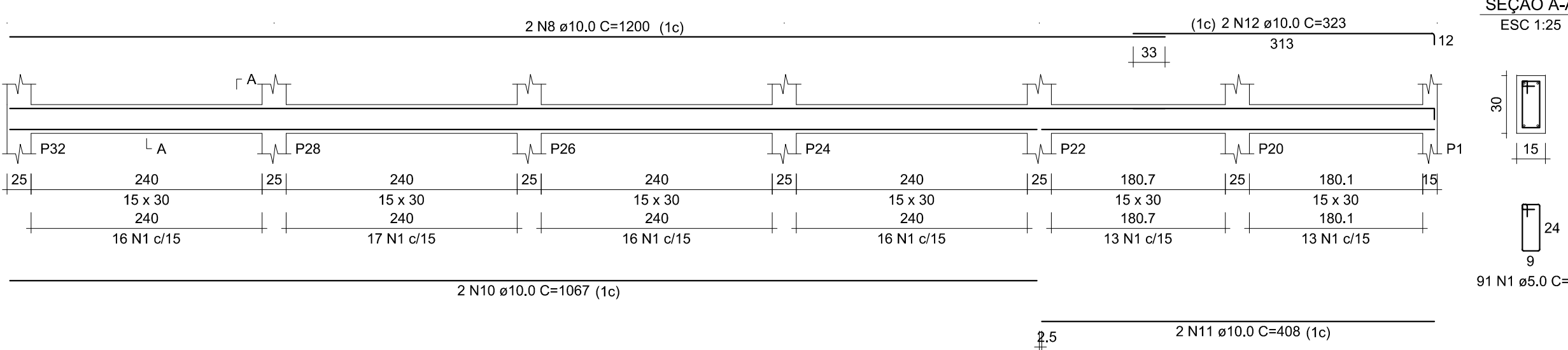
SEÇÃO A-A

ESC 1:25



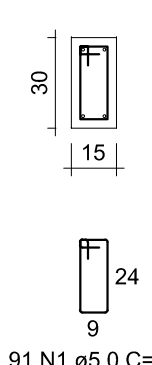
VB15

ESC 1:50



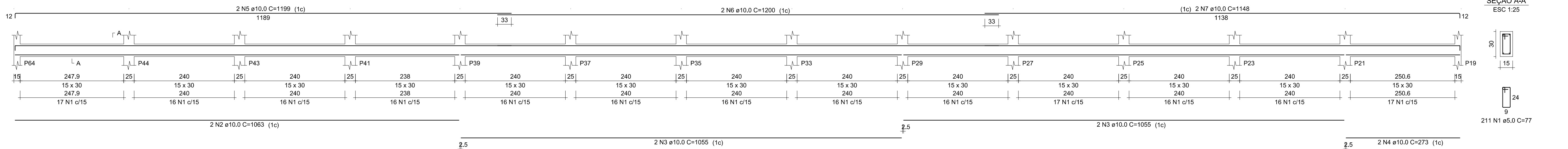
SEÇÃO A-A

ESC 1:25



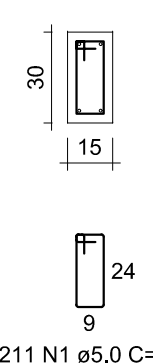
VB16

ESC 1:50



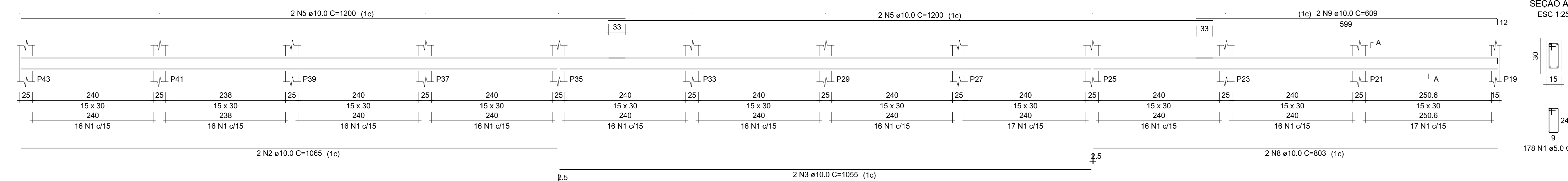
SEÇÃO A-A

ESC 1:25



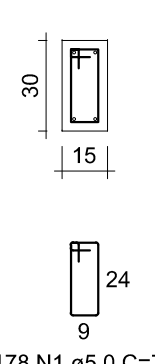
VB1

ESC 1:50



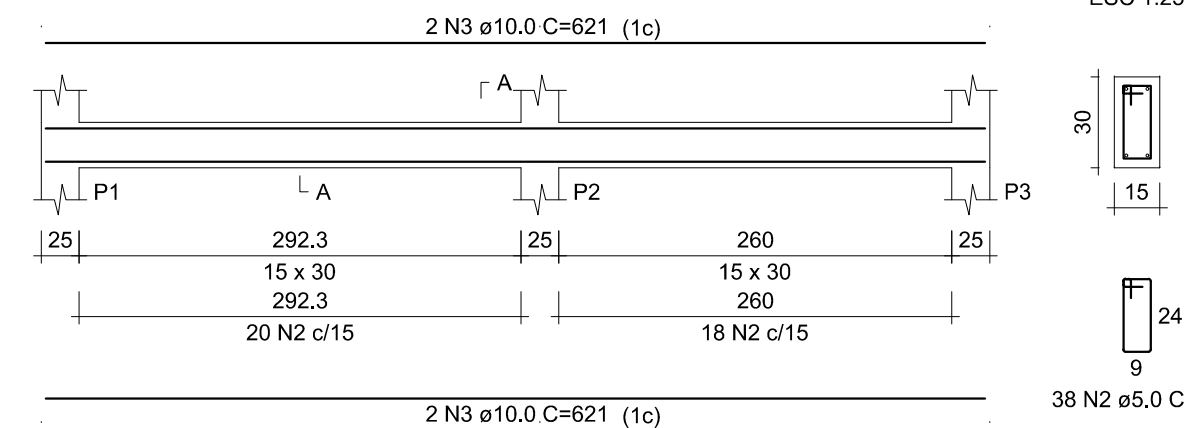
SEÇÃO A-A

ESC 1:25



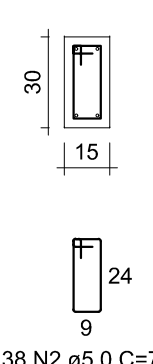
VB1

ESC 1:50



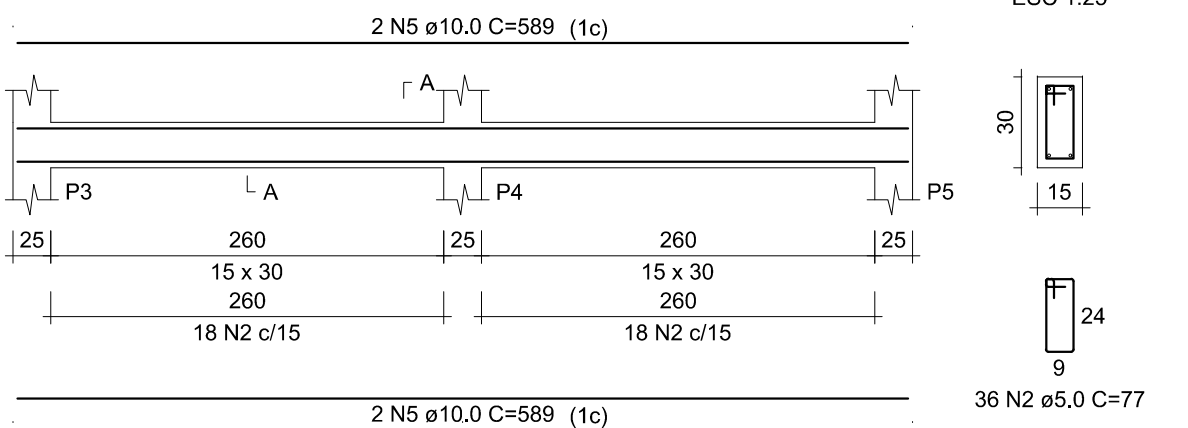
SEÇÃO A-A

ESC 1:25



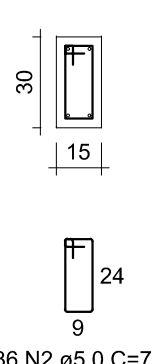
VB2

ESC 1:50



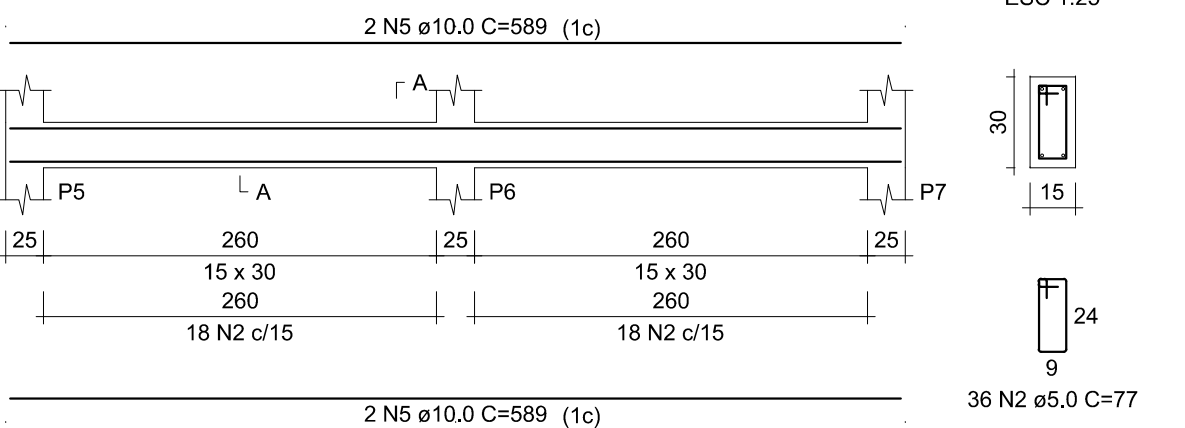
SEÇÃO A-A

ESC 1:25



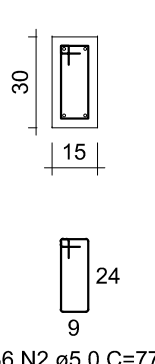
VB3

ESC 1:50



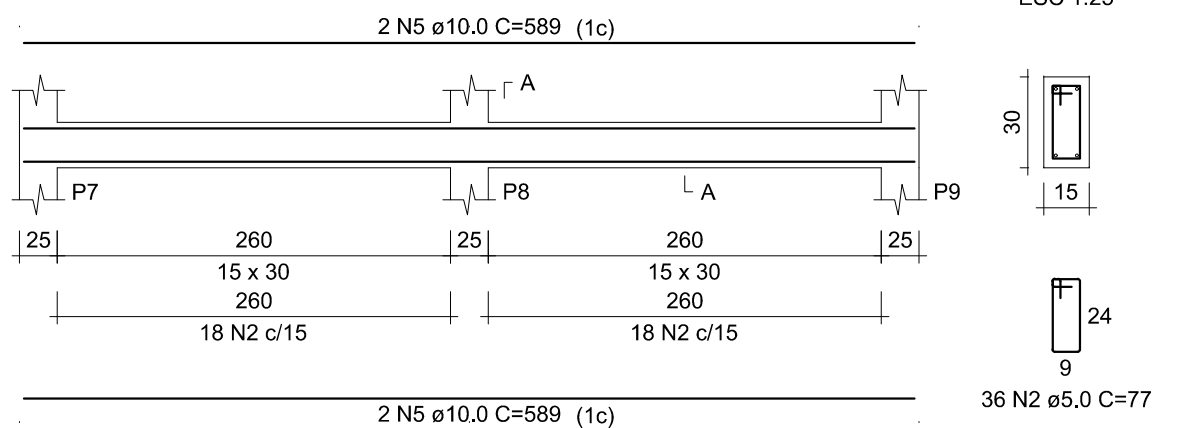
SEÇÃO A-A

ESC 1:25



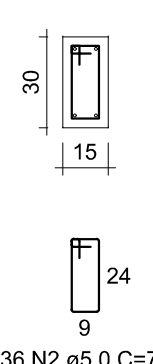
VB4

ESC 1:50



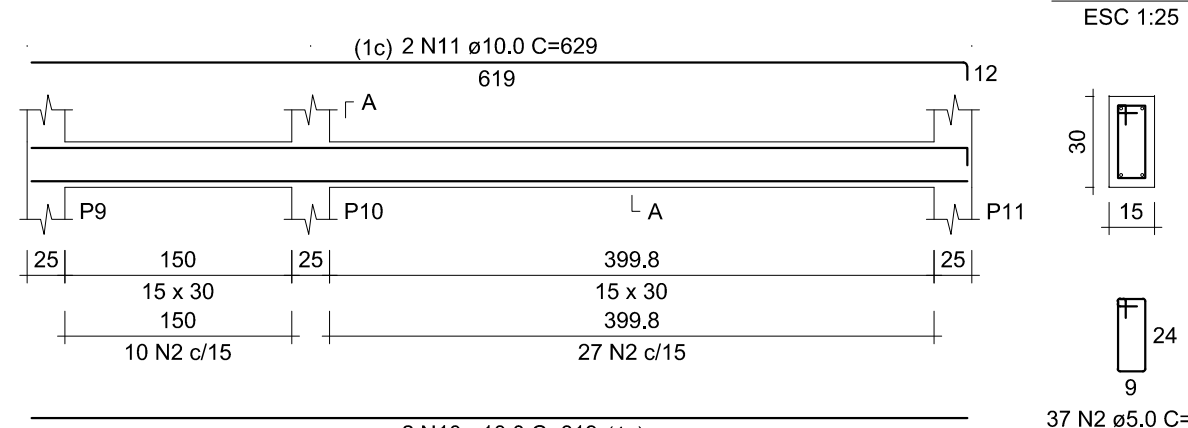
SEÇÃO A-A

ESC 1:25



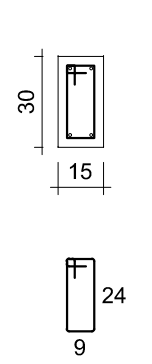
VB5

ESC 1:50



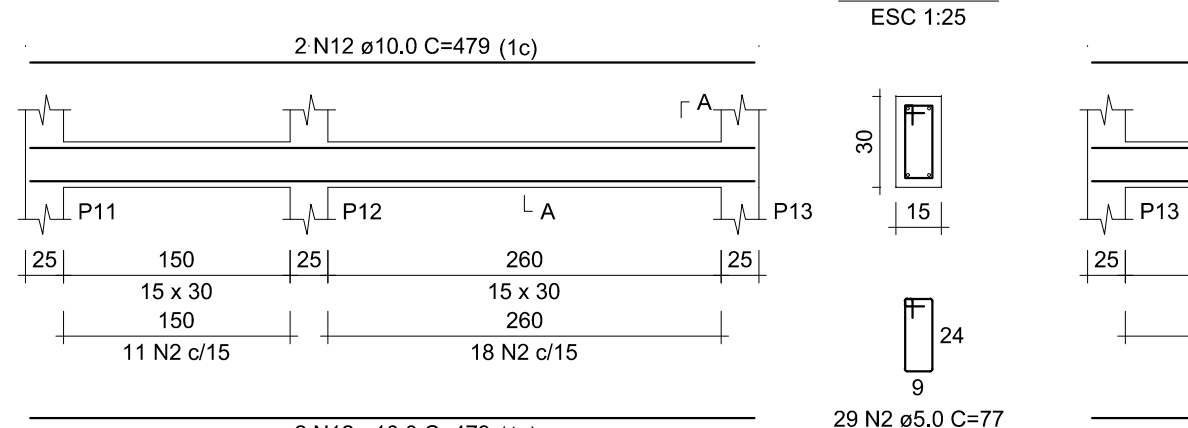
SEÇÃO A-A

ESC 1:25



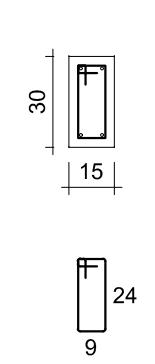
VB6

ESC 1:50



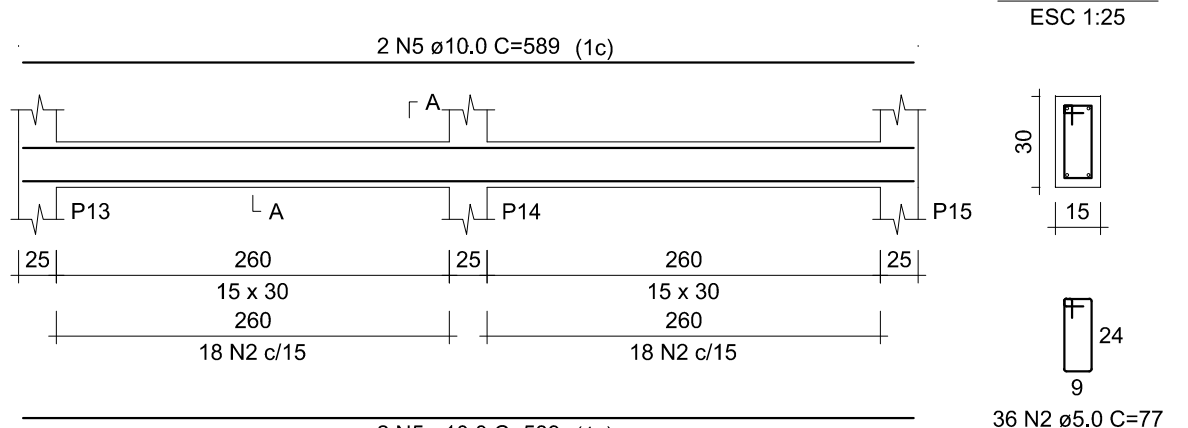
SEÇÃO A-A

ESC 1:25



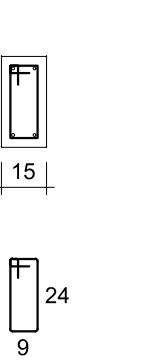
VB7

ESC 1:50



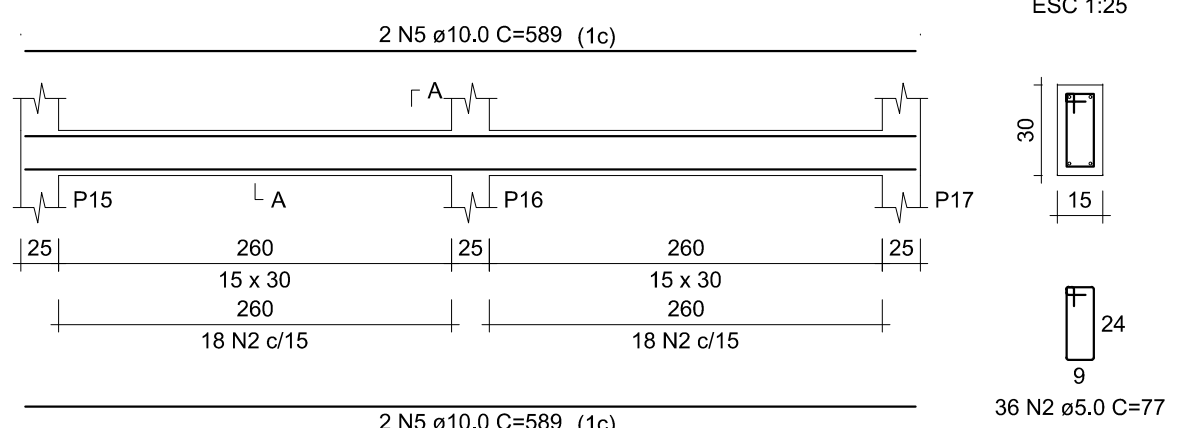
SEÇÃO A-A

ESC 1:25



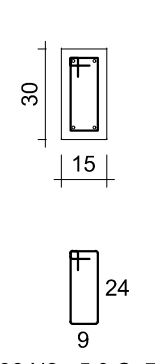
VB8

ESC 1:50



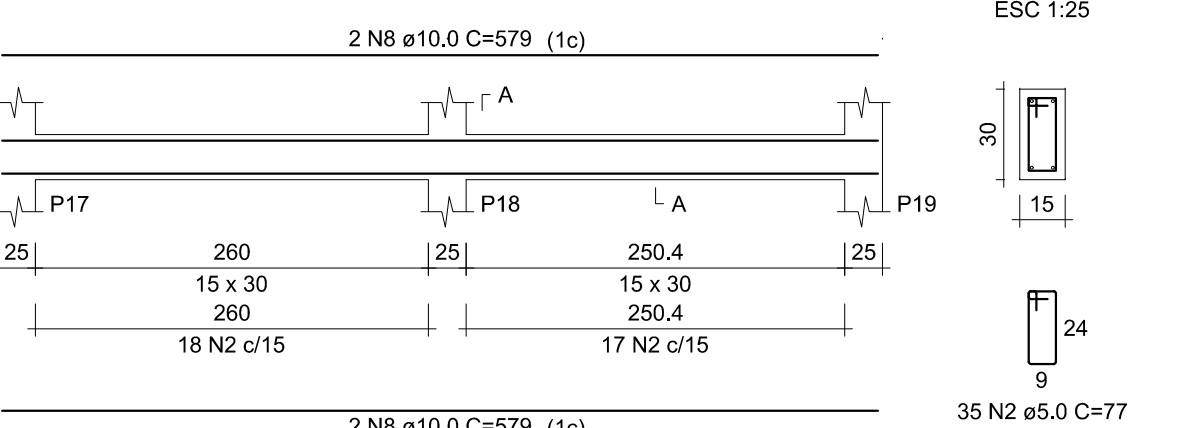
SEÇÃO A-A

ESC 1:25



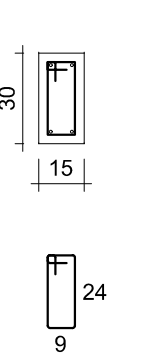
VB9

ESC 1:50



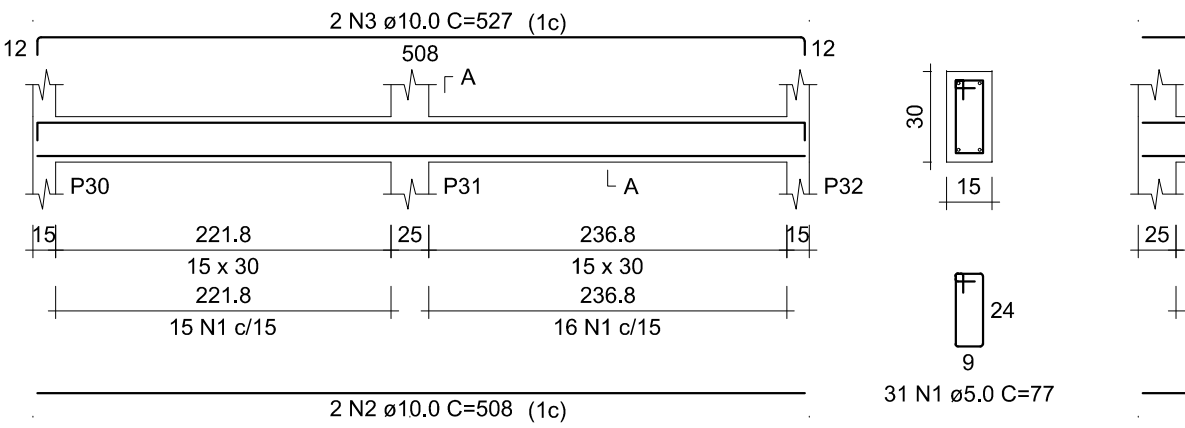
SEÇÃO A-A

ESC 1:25



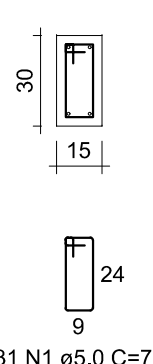
VB10

ESC 1:50



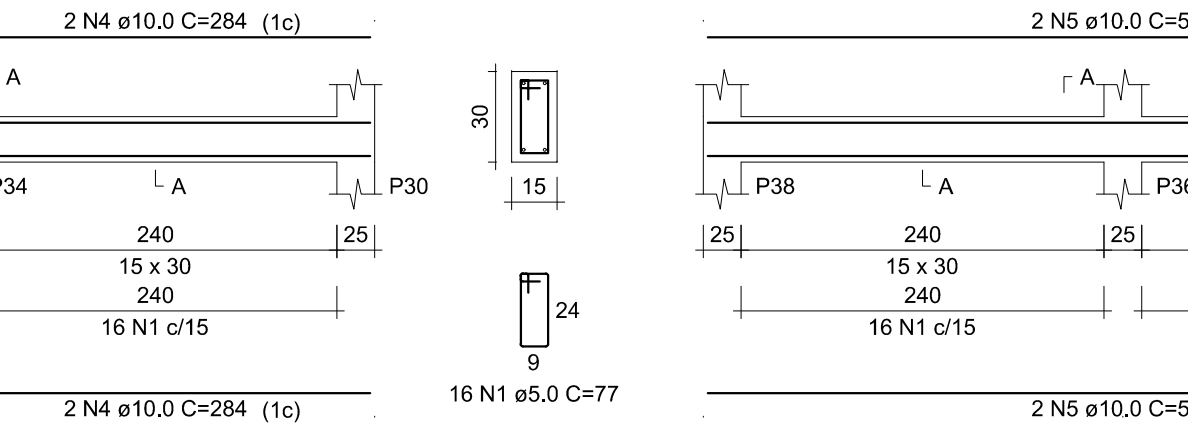
SEÇÃO A-A

ESC 1:25



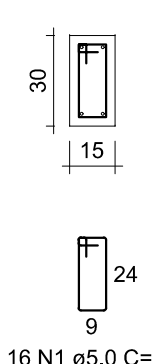
VB11

ESC 1:50



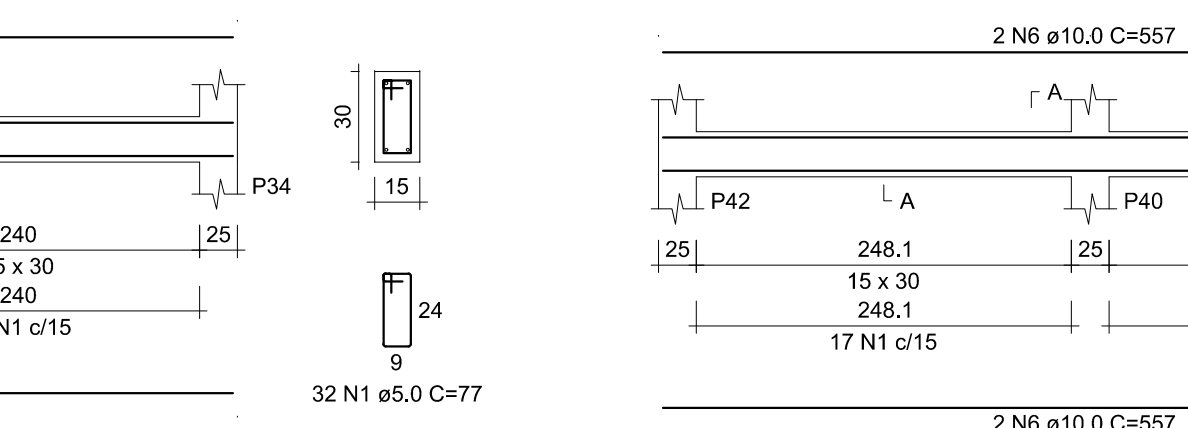
SEÇÃO A-A

ESC 1:25



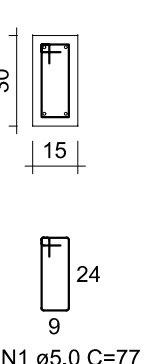
VB12

ESC 1:50



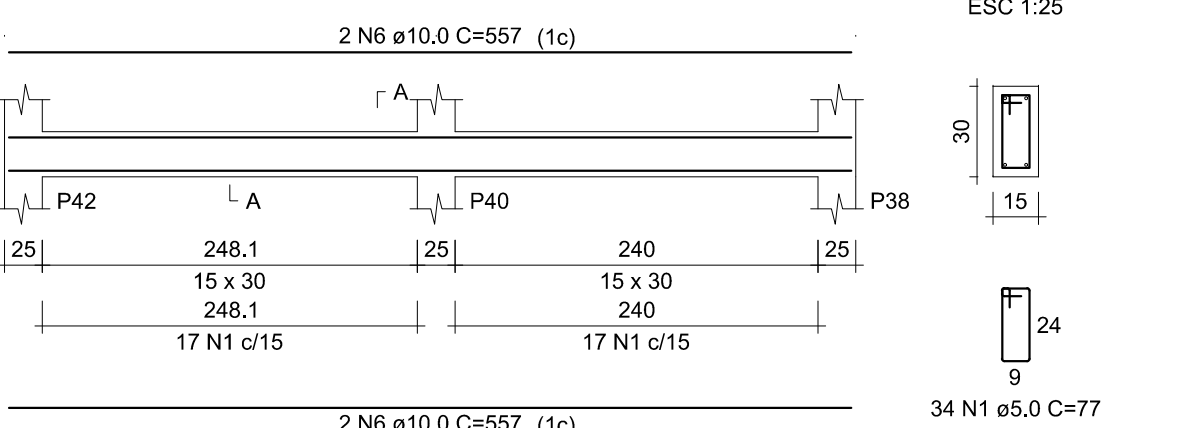
SEÇÃO A-A

ESC 1:25



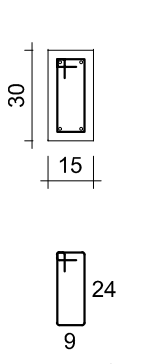
VB13

ESC 1:50



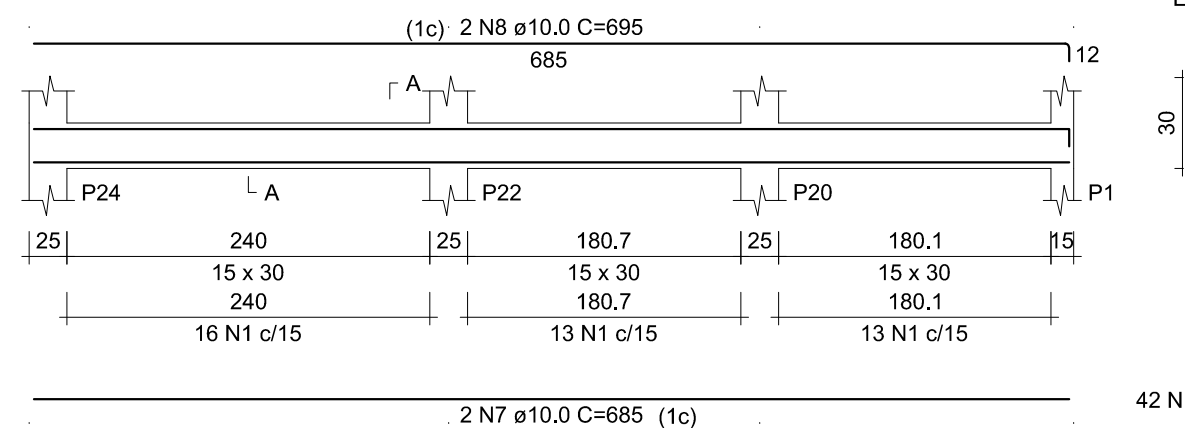
SEÇÃO A-A

ESC 1:25



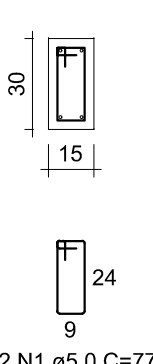
VB14

ESC 1:50



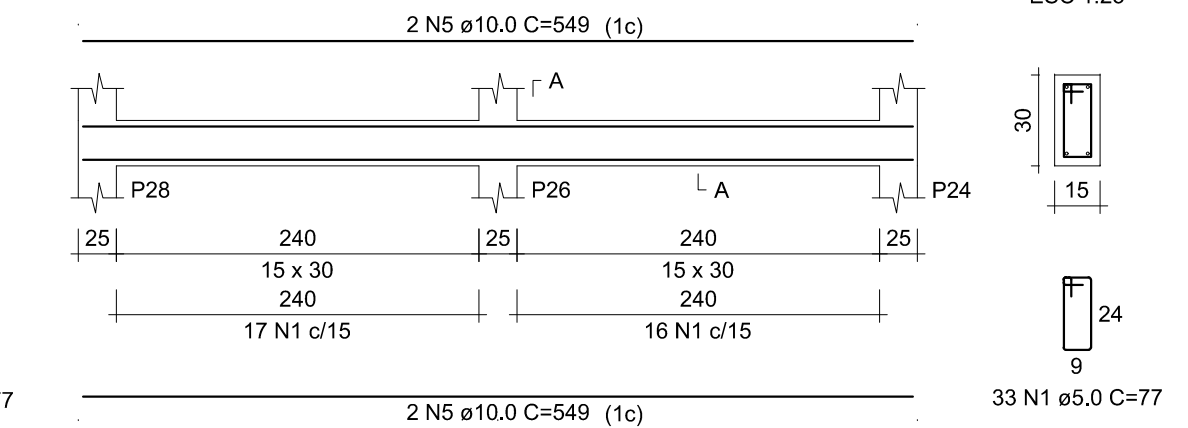
SEÇÃO A-A

ESC 1:25



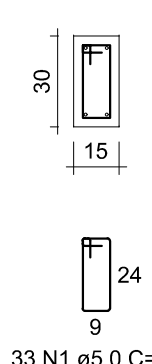
VB15

ESC 1:50



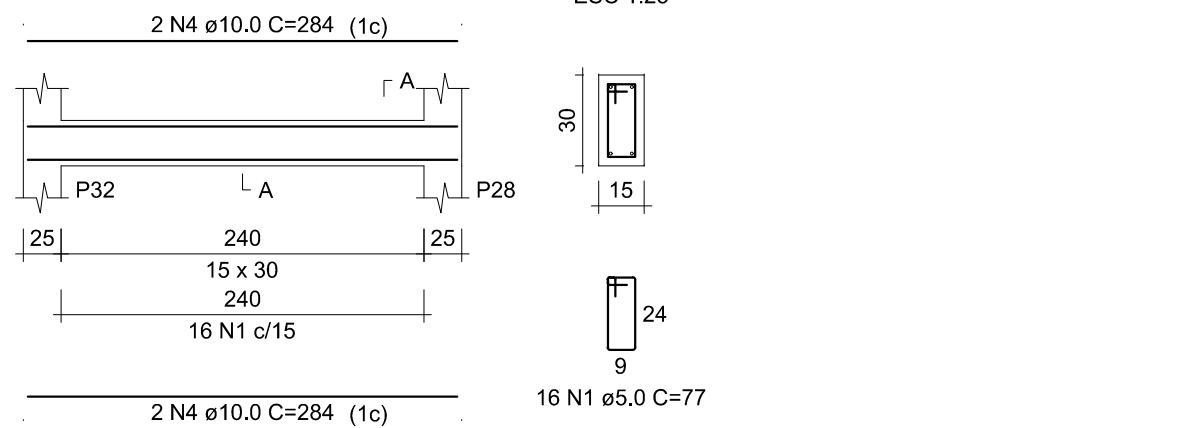
SEÇÃO A-A

ESC 1:25



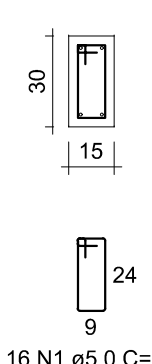
VB16

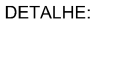

ESC 1:50



SEÇÃO A-A

ESC 1:25



TÍTULO:		PROJETO - MURO DE FECHAMENTO E ESTACIONAMENTO - ESCOLA MUNICIPAL JOÃO ANTONIO MENDES					
DETALHE:		RUA FRANCISCO CORREIA MENDES, N.º 2, ABATE DOS MENDES RIO PARANAÍBA-MG					
	CONTEÚDO:	PROPRIETÁRIO:			FORMATO:		
	VISA INFRABRIGADAS - VBM1, VBM2, VBM3, VBM4, VBM5 E VBM6; VISA VBM1; VISA VBM1 A VBM4.	PREFEITURA MUNICIPAL DE RIO PARANAIBA CNPJ N.º: 18.602.045/0001-00					
R.T.:		AUTOR:			A0		
		BETHANIA CARLA FERNANDES ENGR.º CIVIL - CREA MG 244.289D					
BETHANIA CARLA FERNANDES ENGR.º CIVIL - CREA MG 244.289D		ROBSON CASTRO DE RESENDE SECRETÁRIO MUNICIPAL DE INFRAESTRUTURA, TRANSPORTE E OBRAS					
ALTURA MURO	PERÍMETRO MURO	ZONA:	MEIO-DIA	ESCALA:	DATA:	FOLHA:	FORMATO:
2,50m	174,48m	URBANA	CENTÍMETROS	INDICADA	DEZ/2025	03 / 04	A0